

JLG®

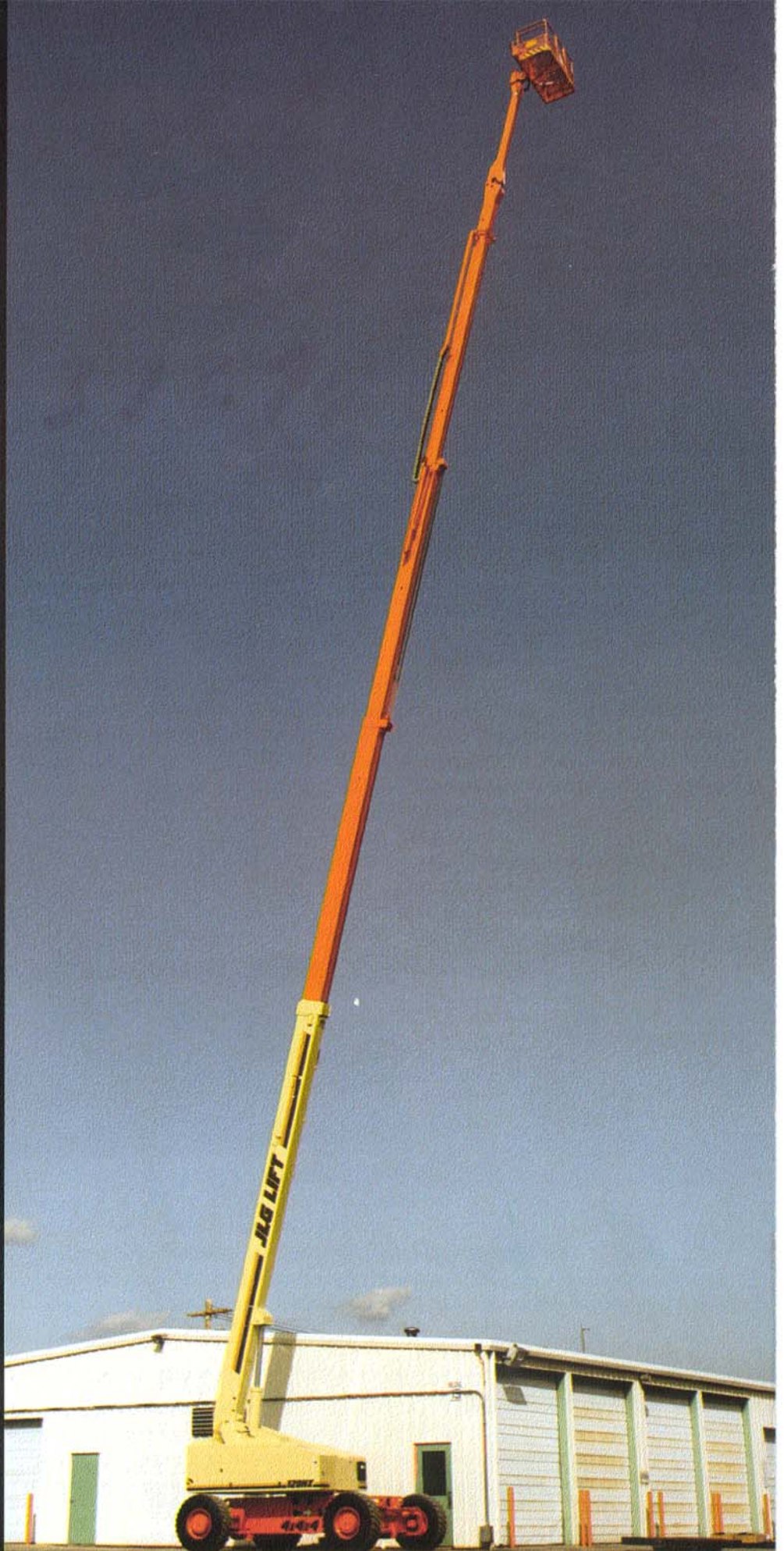
CONSTRUCTION 120HX

120' BOOM LIFT EXTENDABLE AXLE

A high performance telescopic boom lift with extendable axle, JLG's patented Extend-A-Reach, 4-wheel drive and crab steer all as standard equipment. Purpose designed for a wide variety of demanding maintenance, construction and high reach access applications.



13 ft. (4m) Extend-A-Reach feature increases operator versatility in positioning the work platform.





CONSTRUCTION 120HX 120' BOOM LIFT EXTENDABLE AXLE

A high performance telescopic boom lift with extendable axle, JLG's patented Extend-A-Reach, 4-wheel drive and crab steer all as standard equipment. Purpose designed for a wide variety of demanding maintenance, construction and high reach access applications.



13 ft. (4m) Extend-A-Reach feature increases operator versatility in positioning the work platform.

PLATFORM

Standard 72" (1.83m) wide basket. Tubular, welded all-steel construction results in excellent durability. Wire mesh to midrail keeps tools and materials within confines of the platform. Steel grate floor is skid-resistant and provides visibility when lowering the platform. Powered rotator is standard for flexibility in positioning the platform. JLG's exclusive Load Management Indicator System is an audio/visual alert system to indicate allowable working capacities. 500 lbs. (227 kg) and (non-working radius) lights indicate the allowable platform loads to 60' (18.3m) of horizontal reach. At this point, an interlock system prevents further extension without a change in the boom angle. A radius-limiting system, working through the boom telescope cylinder, backs up the Load Management Indicator.



Operator controls are easy to identify and actuate due to the high visibility provided by the box lids, dark backgrounds and large, color pictographs. Variable speed controller enables more precise handling of toggle switch function.

Operator controls are easy to identify and actuate due to the high visibility provided by the box lids, dark backgrounds and large, color pictographs. Variable speed controller enables more precise handling of toggle switch function. This mode is automatically switched into certain areas of the work envelope. Telescope, platform rotate, platform level and Extend-A-Reach control functions are given an infinitely variable range by a variable speed control wheel. Front Steer, Speed/Torque, Ignition/Start, Auxiliary Power, Emergency Stop, 5 degree Slope Light and dual 110V AC Receptacles are included. 12V DC auxiliary power provides full function operation for lowering in the event of main power loss. Toggle switches are equipped with yellow bats for operator comfort. Individual controls are denoted by large, color coded internationally recognized pictograms set on a darkened panel for high visibility.

GROUND CONTROLS

Reciprocal control of boom functions allows operation from ground for maintenance or emergency lowering. Complete instrumentation includes Hourmeter, Voltmeter and Oil Pressure Gauge. Platform/Ground Selector Switch, Overrides for ground user control of Lift, Swing and Telescope, Platform Rotate, Platform level, and Extend-A-Reach, Keyed Master Switch, Ignition/Start Controls, Auxiliary Power. Indicator panel showing capacity range chart with Load Management Indicator lights is used for testing. Drive and Steer are located on a remote control box for ease of transport loading.

HYDRAULIC SYSTEM

Transmission drive system is a closed loop hydraulic system that directly links the drive controller to the drive pump for smooth, responsive proportional control. Coupled with the transmission pump is a gear pump that generates substantial hydraulic flow for high cycle, multiple function boom operations. A large volume, open center, vented reservoir enables constant recycling of hydraulic oil to maintain low system temperature. 20 micron return line filter, 100 mesh suction screen, and a 10 micron filter on the transmission pump.

ENGINE

76 horsepower diesel powered Deutz F4L912 engine provides efficient, powerful operation, long service life and reduced maintenance. High volume air cleaner with pre-cleaner extends engine life. Noise suppression package limits engine noise to 70dBa when measured at 23 ft. (7 meters).

PLATFORM CONTROLS

Low maintenance, moisture resistant electric/hydraulic proportional controls provide smooth operation for drive, lift and swing. Ramping feature delays full power on and off for smooth starts and stops. Drive controller has button atop for steer control of rear wheels. A creep or inching



All boom functions are available from ground control as well as a complete set of system gauges. Drive and steer controls are on a remote box for transport loading.



The fly boom tip can be swung around and pinned to reduce transport length.

BOOM

Four-section power telescoping main boom with a 13-foot (4m) Extend-A-Reach feature attached to the fly boom. This arm extension features the ability to articulate 15° above or 80° below horizontal of the main boom. The Extend-A-Reach gives the operator the benefit of "up and over" or "out and down" access in areas where a straight boom would encounter interference with such obstacles as structural steel framework, dock areas, and overhead duct work. The Extend-A-Reach folds back and is pinned to reduce stowed machine length. The main boom sections

are manufactured from individual high strength alloy steel plates fixtured and welded simultaneously on an automatic welding machine. The result is a durable boom with minimal deflection, long service life, and an optimum strength-to-weight ratio. The four-section power telescoping design includes a lower mid-section operated by a double acting hydraulic cylinder with a load holding valve. Fly section and upper mid-section are driven by heavy-duty leaf-type chain. Self-lubricating discs enable smooth extension and retraction for the all-steel powertracks which are externally mounted for easy inspection and maintenance of hoses and electrical cable.

TURNTABLE/FRAME

Planetary speed reducer driven by hydraulic motor provides 360 degree continuous rotation. Multiple disc brake is spring-applied, hydraulically released. An extendable axle design permits a narrow retracted chassis width of 8' 6" (2.59m) for transport. Axles are hydraulically elevated by lifting jacks on both ends of the chassis and then hydraulically extended to their 10' 10" (3.30m) maximum width. Interlock systems prevent boom elevation above horizontal or boom telescope without the axles being extended. A light in the control panel indicates that the axles have been set. Extendable axles help reduce overall machine GVW over fixed axle designs increasing machine mobility and decreasing wear on system components.

STEERING

Standard four-wheel/crab steering enables maneuvering in confined areas. Four wheel steer provides a substantially reduced turning radius over two-wheel steer units. Crab steer provides sideward movement that enables more precise positioning along walls, framework, or other work areas.

DRIVE SYSTEM

Standard four-wheel drive features planetary gear reduction on all four wheels driven by high volume piston drive motors providing powerful drive operation. Three flow dividers balance the hydraulic flow over uneven terrain for increased grade-climbing capability. Automatic spring-applied, hydraulically released disc brakes are on all drive wheels.

OPTIONAL EQUIPMENT

Worklights Package, Hostile Environment Kit, Travel Alarm, Rotating Beacon, Cold Weather Package and CSA and EN280 European Packages.



Axles are hydraulically elevated on cylinder jacks for extension to travel widths. Standard four wheel drive and four wheel/crab steer provide the best in power and maneuverability.

THE BEST PROTECTION IN THE BUSINESS



The JLG ONE&FIVE Warranty covers the entire machine for one full year and all specified major structural components for five full years. This warranty—the industry's best—represents JLG's commitment to superior quality standards.

SERVICE AND SUPPORT NEARBY... IN EVERY CORNER OF THE WORLD

Along with a high level of engineering expertise, you can depend on JLG's commitment to customer satisfaction. We ship 90% of in-stock parts orders received from JLG distributors within a 24-hour period—a level of service envied by most access and lift equipment manufacturers. Service support is available from factory-trained specialists throughout our extensive distributor network.

Due to continuous product improvements, we reserve the right to make specification and/or equipment changes without prior notification.

This machine meets or exceeds applicable OSHA Regulations in 29 CFR 1910.67, 1926.451.(f) 29 CFR 1926.556, ANSI A92.5-1980, as originally manufactured for intended applications.



JLG PERFORMING AT A HIGHER LEVEL

120HX MACHINE SPECIFICATIONS

PLATFORM HEIGHT	120 ft. 0 in. 36.6m	MAIN PUMP OUTPUT	Piston 34 gpm @ 2500 rpm 128 L/min.
WORKING HEIGHT	126 ft. 0 in. 38.4m	Gear 12 gpm @ 2500 rpm 45 L/min.	
PLATFORM DIMENSIONS	36" x 72" x 44" 91m x 1.83m x 1.12m	AUXILIARY PUMP OUTPUT	4.75 gpm 18 L/min.
PLATFORM CAPACITY	500 lbs. 227 kg.	HYDRAULIC TANK CAPACITY	50 U.S. gals. 189 L.
STOWED LENGTH	Working 52 ft. 4 in. 15.9m	FUEL TANK CAPACITY	26 U.S. gals. 98 L.
	Transport 35 ft. 11 in. 10.9m	TRAVEL SPEED	2.75 mph 4.43 km/hr
STOWED HEIGHT	10 ft. 4 in. 3.15m	GRADEABILITY	40% 22°
WIDTH	Axles retracted 8 ft. 6 in. 2.59m	OUTSIDE TURNING RADIUS	18 ft. 9.75 in. 5.73m
	Axles extended 10 ft. 10 in. 3.30m	HORIZONTAL REACH	60 ft. 0 ft. 18.3 m
TAILSWING	34 in. 86m	TIRES (Foam Filled)	445/65R - 22.5
GROSS WEIGHT (approx)	(1) 43,500 lbs. (1) 19,750 kg.	WHEELBASE	11 ft. 4.5 in. 3.47m
		GROUND CLEARANCE	12 in. 33 cm
ENGINE	Diesel 76 HP @ 2500 rpm		

(1)GWW may increase to meet country standards or with the addition of optional equipment.

THE BEST PROTECTION IN THE BUSINESS



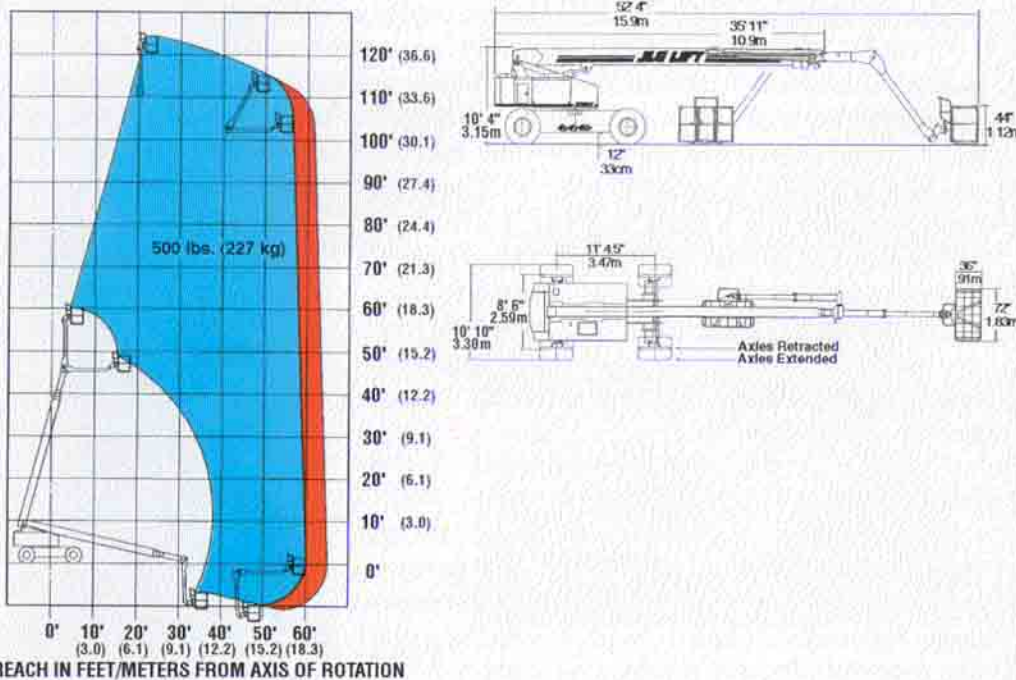
The JLG ONE&FIVE Warranty covers the entire machine for one full year and all specified major structural components for five full years. This warranty—the industry's best—represents JLG's commitment to superior quality standards.

SERVICE AND SUPPORT NEARBY... IN EVERY CORNER OF THE WORLD

Along with a high level of engineering expertise, you can depend on JLG's commitment to customer satisfaction. We ship 90% of in-stock parts orders received from JLG distributors within a 24-hour period—a level of service envied by most access and lift equipment manufacturers. Service support is available from factory-trained specialists through our extensive distributor network.

*Due to continuous product improvements, we reserve the right to make specification and/or equipment changes without prior notification.
This machine meets or exceeds applicable OSHA Regulations in 29 CFR 1910.67, 1926.451, (f) 29 CFR 1926.556, ANSI A92.5-1980, as originally manufactured for intended applications.*

120HX REACH DIAGRAM



For hire and sales information contact : □

t - 0800 52 15 95 or +44 (0) 1444 88 09 13 □

f - +44 (0) 1444 88 11 99 □

e - sales@facelift.co.uk w - www.facelift.co.uk □

facelift

hire - sales - service - training