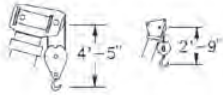




Range Diagram and Lifting Capacity | RT230

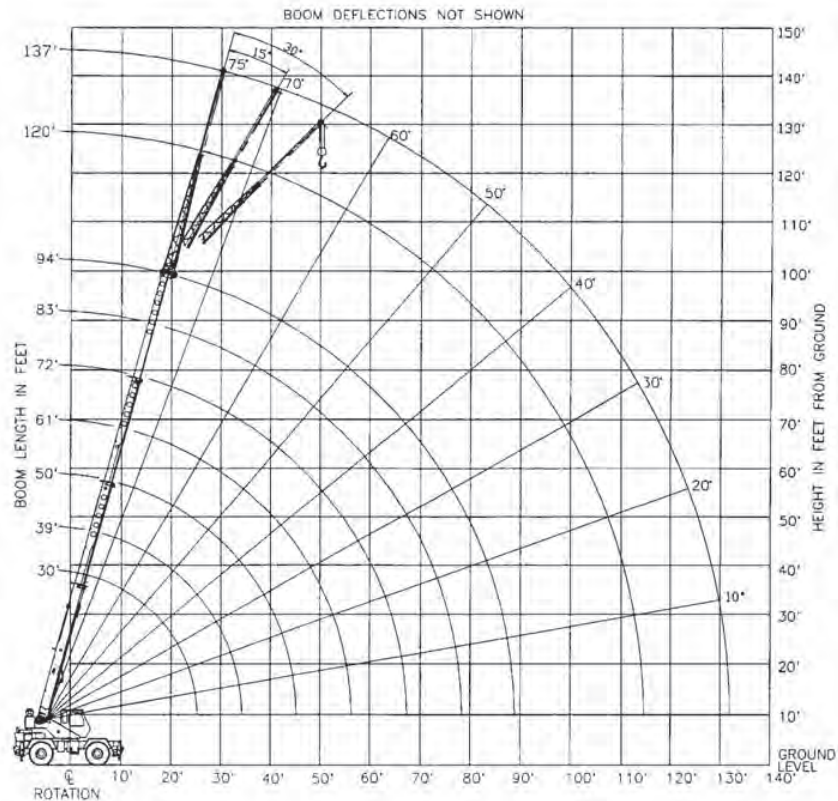
30 TON LIFTING CAPACITY

RANGE DIAGRAM 30' - 94' BOOM

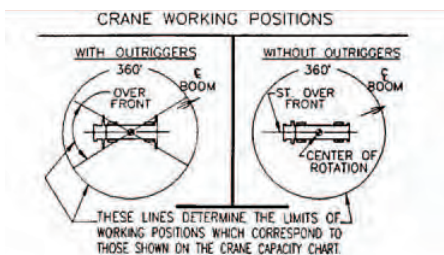


Dimensions are for largest factory furnished hook block and hook & ball, with anti-two block activated

COUNTER WEIGHT	W/AUX. WINCH 8,900 LB W/O AUX. WINCH 10,000 LB
BOOM LENGTH	30'-94'
OUTRIGGER SPREAD	19'
STABILITY PERCENTAGE	ON OUTRIGGERS 85% ON TIRES 75%
PCSA CLASS	10-118



CRANE WORKING CONDITIONS



REDUCTION IN MAIN BOOM CAPACITY

All jib in stowed position	0 lb
ax. boom in head sheave	100 lb

HOOK BLOCK WEIGHTS

Hook and ball	240 lb
Hook block (2 sheave)	680 lb
Hook block (3 sheave)	670 lb
Hook block (4 sheave)	653 lb



**ROUGH TERRAIN CRANE
RT230**

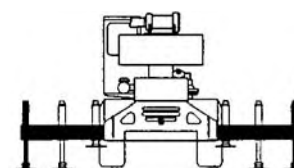
LIFTING CAPACITIES

CAUTION: Do not use this specification sheet as a load rating chart. The format of data is not consistent with the machine chart and may be subject to change

ON OUTRIGGERS - FULLY EXTENDED

LOAD RADIUS (FT)	BOOM LENGTH 30'			BOOM LENGTH 39'			BOOM LENGTH 50'			LOAD RADIUS (FT)
	LOADED BOOM ANGLE (DEG)	OVER FRONT (LB)	360° (LB)	LOADED BOOM ANGLE (DEG)	OVER FRONT (LB)	360° (LB)	LOADED BOOM ANGLE (DEG)	OVER FRONT (LB)	360° (LB)	
10	63.0	60,000*	60,000*	69.4	46,600*	46,600*				10
12	58.5	50,100*	50,100*	55.2	46,600*	46,600*	71.7	44,500*	44,500*	12
15	51.4	40,100*	40,100*	61.2	40,000*	40,000*	68.0	38,500*	38,500*	15
20	37.4	30,100*	30,100*	52.3	30,000*	30,000*	61.6	30,000*	30,000*	20
25	13.7	22,800*	22,900*	42.0	23,600*	23,600*	54.8	24,000*	24,000*	25
30	**			28.8	18,600*	18,600	47.3	19,100*	19,100*	30
35				**			38.7	15,500	15,100	35
40							27.9	12,100	11,800	40
45							7.9	9,600	9,300	45
50							**			50
55										55
60										60
65										65
70										70
75										75
80										80
85										85

USE THESE CHARTS ONLY WHEN ALL OUTRIGGERS ARE FULLY EXTENDED





**ROUGH TERRAIN CRANE
RT230**

LIFTING CAPACITIES **CAUTION:** Do not use this specification sheet as a load rating chart. The format of data is not consistent with the machine chart and may be subject to change

ON OUTRIGGERS - FULLY EXTENDED

LOAD RADIUS (FT)	BOOM LENGTH 61'			BOOM LENGTH 72'			BOOM LENGTH 83'			BOOM LENGTH 94'			LOAD RADIUS (FT)
	LOADED BOOM ANGLE (DEG)	OVER FRONT (LB)	360° (LB)	LOADED BOOM ANGLE (DEG)	OVER FRONT (LB)	360° (LB)	LOADED BOOM ANGLE (DEG)	OVER FRONT (LB)	360° (LB)	LOADED BOOM ANGLE (DEG)	OVER FRONT (LB)	360° (LB)	
10													10
12													12
15	72.1	36,000*	36,000*										15
20	67.1	29,500*	29,500*	70.8	27,400*	27,400*							20
25	61.9	24,000*	24,000*	66.5	23,100*	23,100*	69.8	19,000*	19,000*	72.2	15,300*	15,300*	25
30	56.3	19,400*	19,400*	62.0	19,600*	19,600*	66.0	15,900*	15,900*	69.0	13,100*	13,100*	30
35	50.4	15,700	15,400	57.4	15,900	15,500	62.2	13,800*	13,800*	65.7	11,400*	11,400*	35
40	43.9	12,400	12,100	52.5	12,600	12,300	58.1	12,000*	12,000*	62.2	10,000*	10,000*	40
45	36.5	10,000	9,800	47.2	10,200	9,900	53.9	10,300	10,000	58.7	8,800*	8,800*	45
50	27.3	8,200	7,900	41.4	8,400	8,100	49.5	8,500	8,300	55.1	7,900*	7,900*	50
55	13.0	6,700	6,500	34.8	7,000	6,800	44.7	7,100	6,900	51.2	7,100*	7,000	55
60	**			26.9	5,800	5,600	39.5	6,000	5,800	47.2	6,100	5,800	60
65				15.5	4,800	4,600	33.6	5,000	4,800	42.8	5,100	4,900	65
70				**			26.6	4,200	4,100	38.0	4,300	4,200	70
75							17.0	3,500	3,400	32.7	3,700	3,500	75
80							**			26.4	3,100	2,900	80
85										18.1	2,600	2,400	85

****MAXIMUM CAPACITY AT 0 DEGREE BOOM ANGLE**

BOOM LENGTH 30'			BOOM LENGTH 39'			BOOM LENGTH 50'			BOOM LENGTH 61'			BOOM LENGTH 72'			BOOM LENGTH 83'			BOOM LENGTH 94'		
LOAD RADIUS (FT)	OVER FRONT (LB)	360° (LB)	LOAD RADIUS (FT)	OVER FRONT (LB)	360° (LB)	LOAD RADIUS (FT)	OVER FRONT (LB)	360° (LB)	LOAD RADIUS (FT)	OVER FRONT (LB)	360° (LB)	LOAD RADIUS (FT)	OVER FRONT (LB)	360° (LB)	LOAD RADIUS (FT)	OVER FRONT (LB)	360° (LB)	LOAD RADIUS (FT)	OVER FRONT (LB)	360° (LB)
25.6	21,900	21,900	34.3	15,200	14,900	45.3	9,400	9,100	56.3	6,300	6,100	67.3	4,400	4,200	78.3	3,100	2,900	89.3	2,100	2,000

