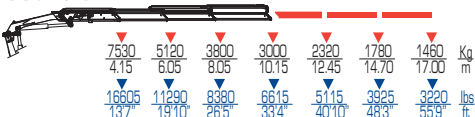




36522 S



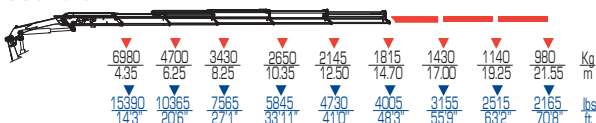
36523 S



36524 S



36525 S



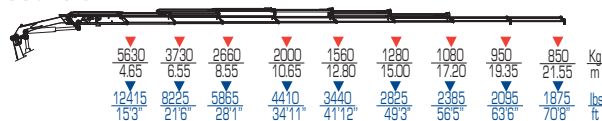
36526 S



36527 S










36528 S



|         | tm   | ft lbs | l/min | gals/min | Mpa  | Psi  | °   |
|---------|------|--------|-------|----------|------|------|-----|
| 36522 S | 32,7 | 236660 | 80    | 21       | 30,5 | 4420 | 410 |
| 36523 S | 31,9 | 226030 | 80    | 21       | 30,5 | 4420 | 410 |
| 36524 S | 31,4 | 227320 | 80    | 21       | 30,5 | 4420 | 410 |
| 36525 S | 30,4 | 219620 | 80    | 21       | 30,5 | 4420 | 410 |
| 36526 S | 29,6 | 210880 | 80    | 21       | 30,5 | 4420 | 410 |
| 36527 S | 26,3 | 190550 | 80    | 21       | 27,5 | 3990 | 410 |
| 36528 S | 26,0 | 188880 | 80    | 21       | 27,5 | 3990 | 410 |



|  ST |  ST |  LC |  LC | mm   |  ft | mm   |  ft | mm   |  ft |
|---|--|--|--|------|--|------|--|------|--|
| 3100  | 6835   | 3210   | 7080   | 2505 | 8'2"   | 2370 | 7'9"   | 1125 | 3'8"   |
| 3300  | 7280   | 3410   | 7520   | 2505 | 8'2"   | 2370 | 7'9"   | 1125 | 3'8"   |
| 3490  | 7695   | 3600   | 7940   | 2505 | 8'2"   | 2370 | 7'9"   | 1125 | 3'8"   |
| 3665  | 8080   | 3775   | 8325   | 2520 | 8'3"   | 2370 | 7'9"   | 1175 | 3'10"  |
| 3885  | 8485   | 3985   | 8800   | 2520 | 8'3"   | 2370 | 7'9"   | 1200 | 3'11"  |
| 3955  | 8720   | 4065   | 8965   | 2520 | 8'3"   | 2370 | 7'9"   | 1220 | 3'11"  |
| 4065  | 9065   | 4175   | 9205   | 2520 | 8'3"   | 2415 | 7'11"  | 1240 | 4'1"   |